

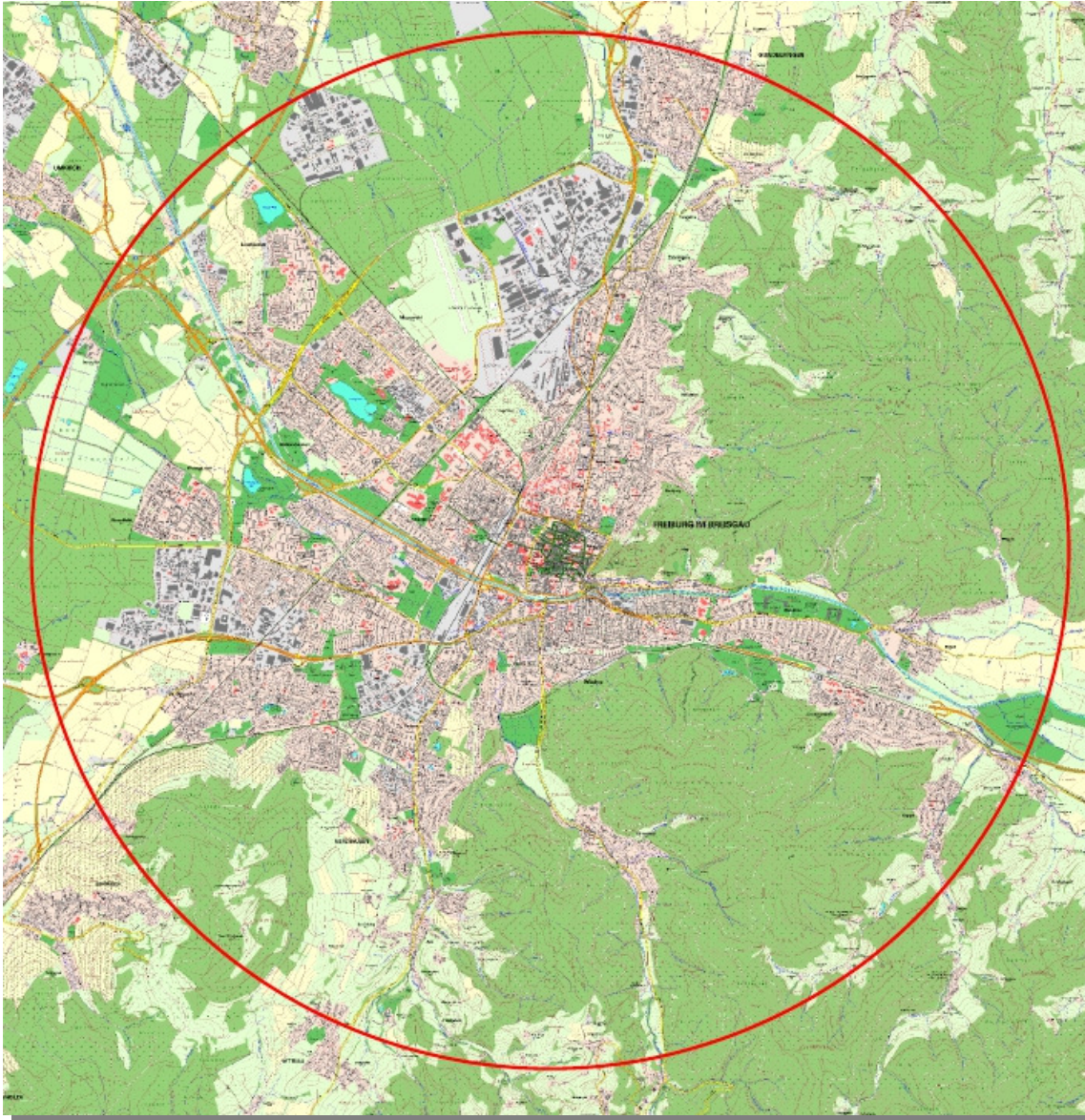
# Neue Siedlungsflächen für Freiburg

## Pressekonferenz am 20.11.2012



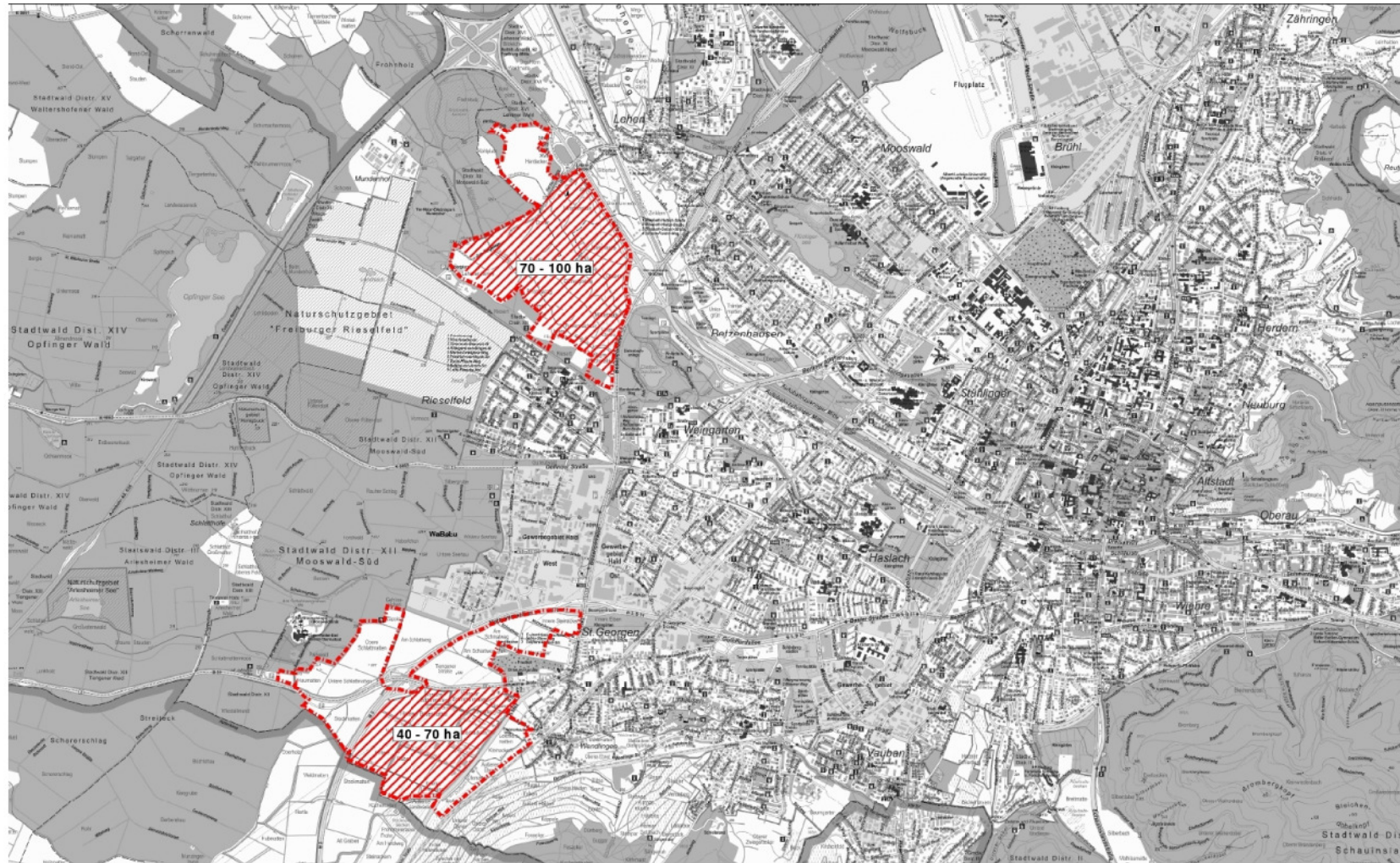


# Untersuchungsraum (6 km)





# Umgriffe Wohnflächenpotenziale



## Alternativen der Siedlungsentwicklung

Stadtplanungsamt  
Abt. Stadtentwicklung

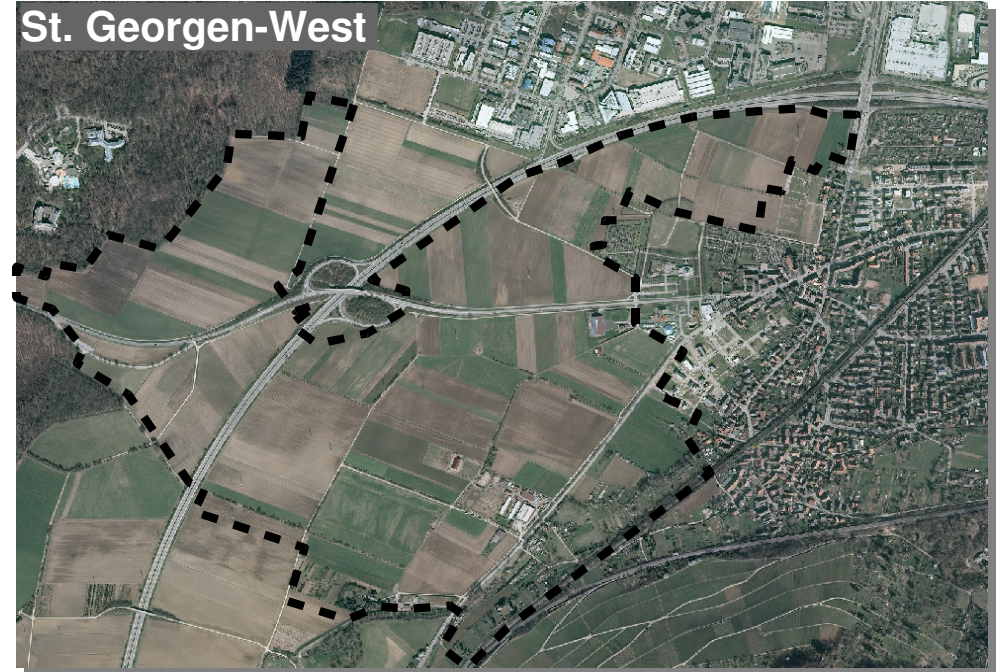
Freiburg  
IM BREISGAU

0 250 500 1.000 Meter

15.10.2012 M 1:25.000 (DIN A 3)

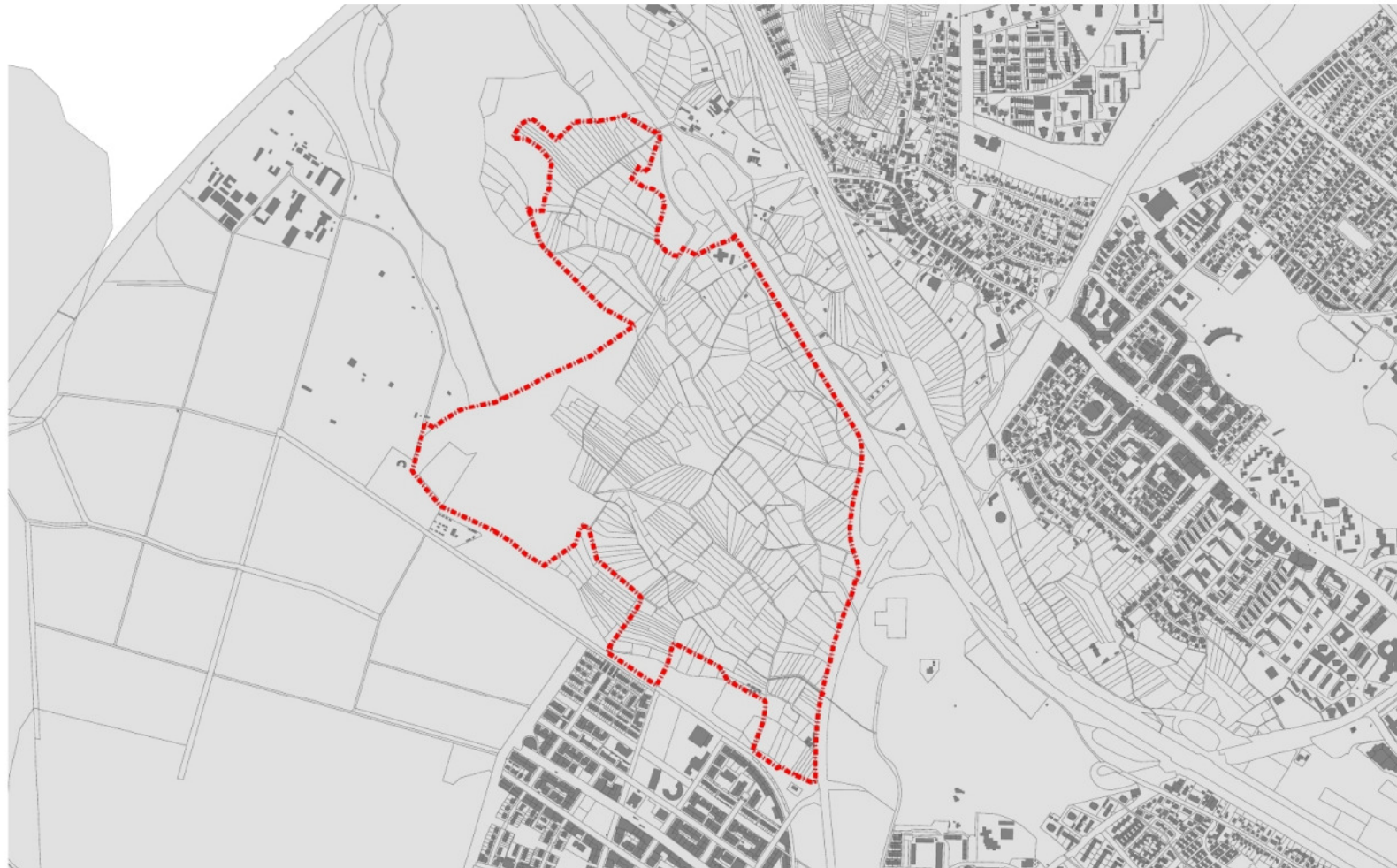


# Luftbild

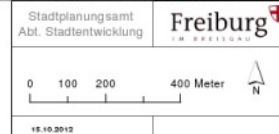




# Untersuchungsgebiet Dietenbach

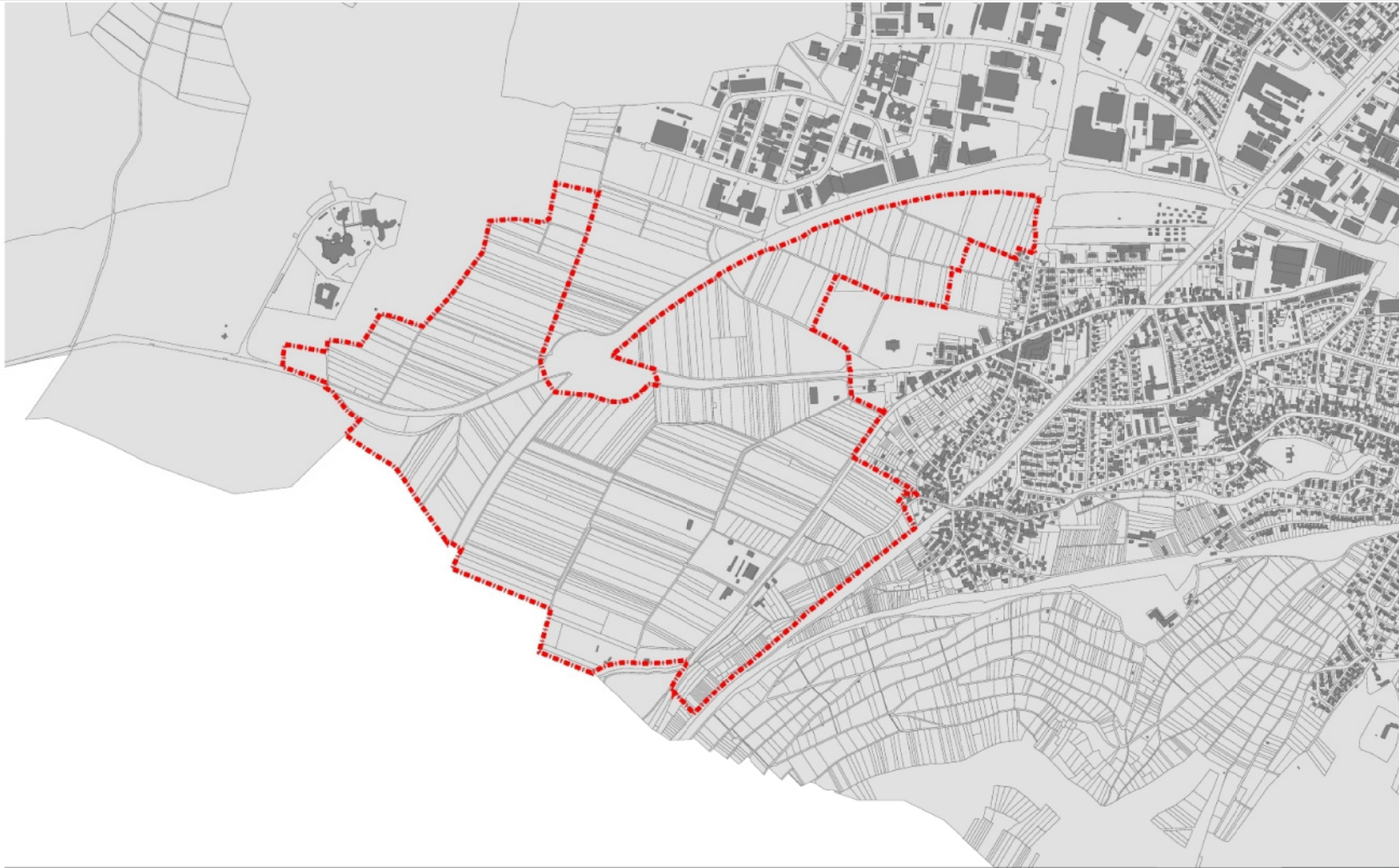


**Umgriff Dietenbach (126 ha)**





# Untersuchungsgebiet St. Georgen-West




**Umgriff St. Georgen-West (163 ha)**

Stadtplanungsamt  
Abt. Stadtentwicklung

Freiburg  
IM BREISGAU

0 100 200 400 Meter

15.10.2012



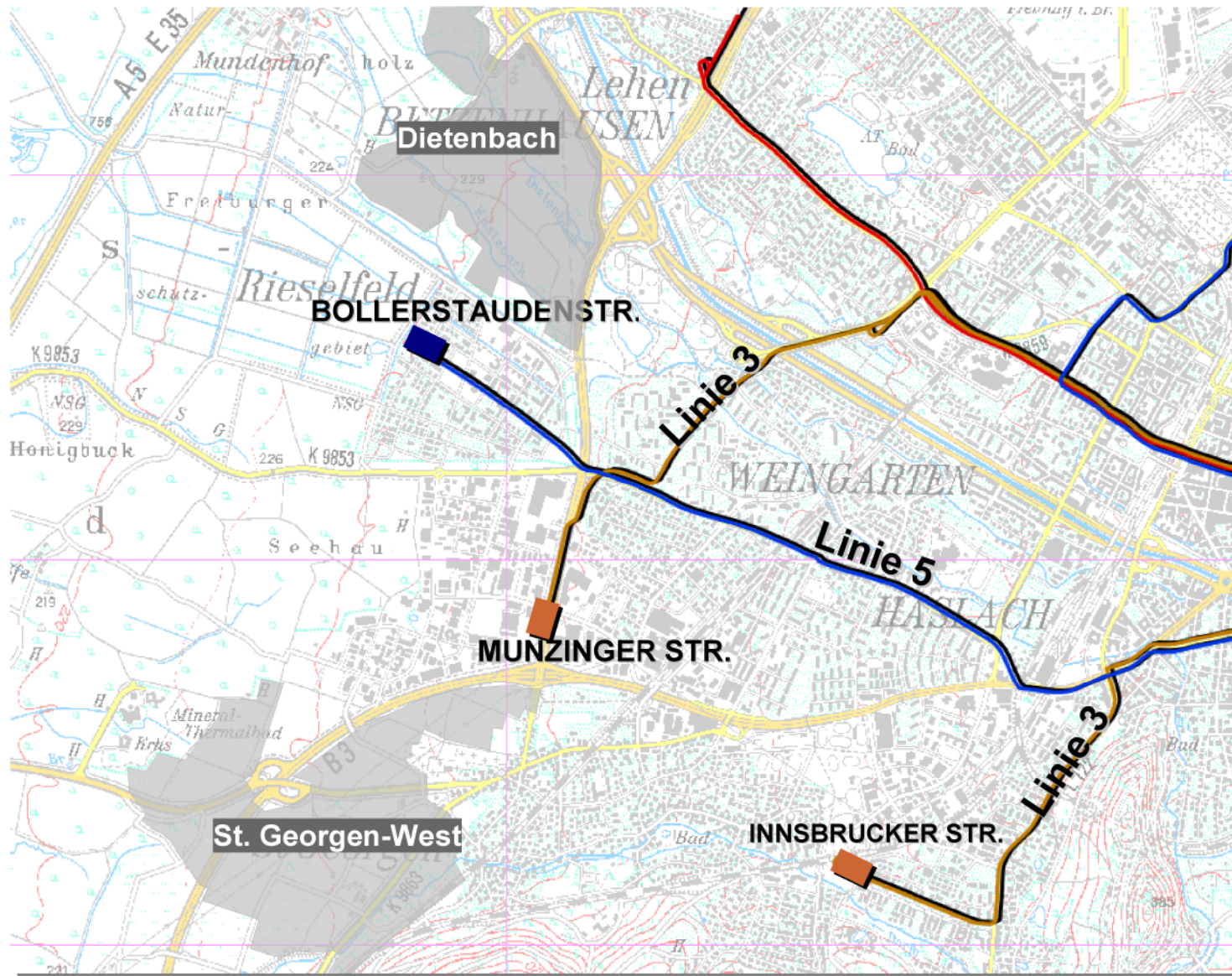


# Fünf-Finger-Plan



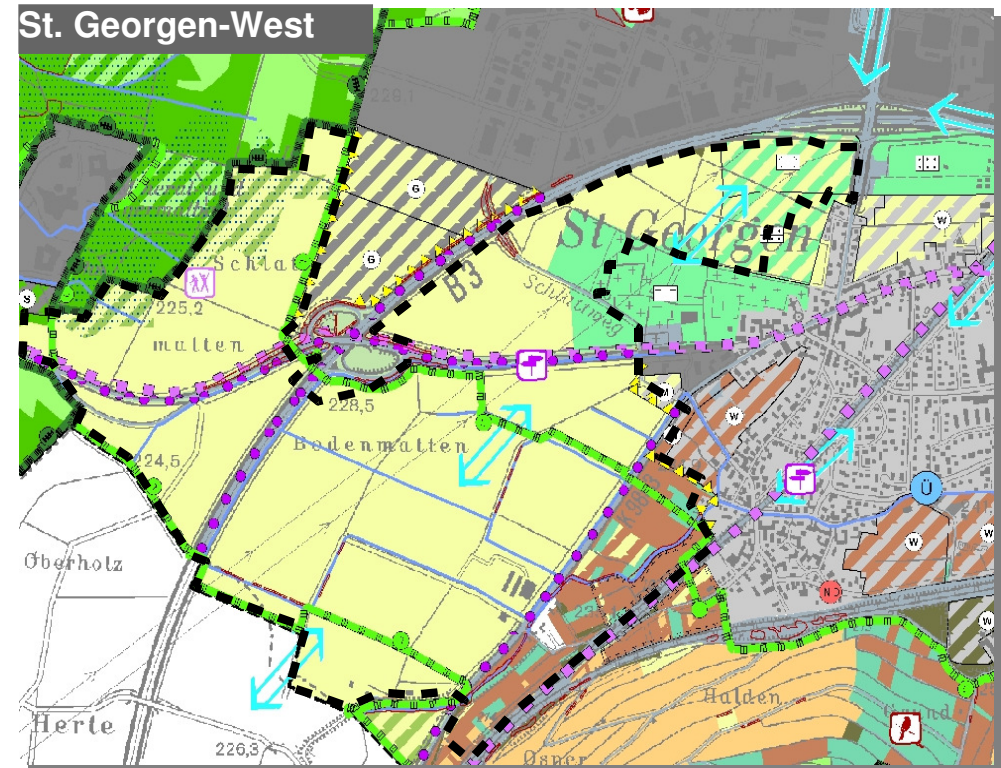
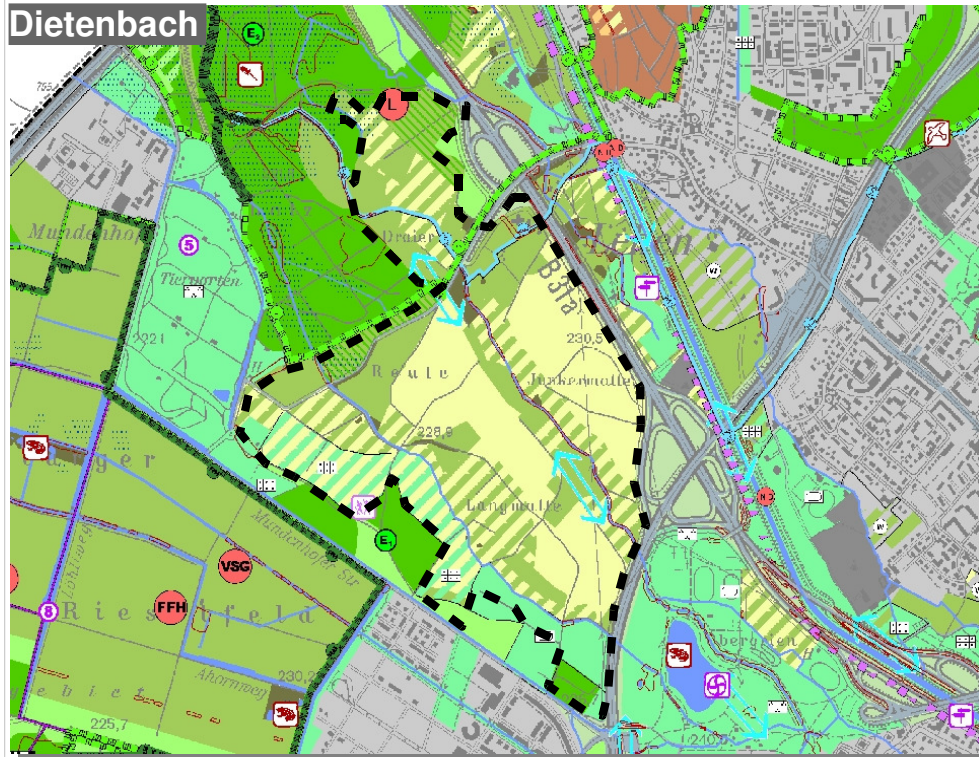


# Verkehrsanschluss



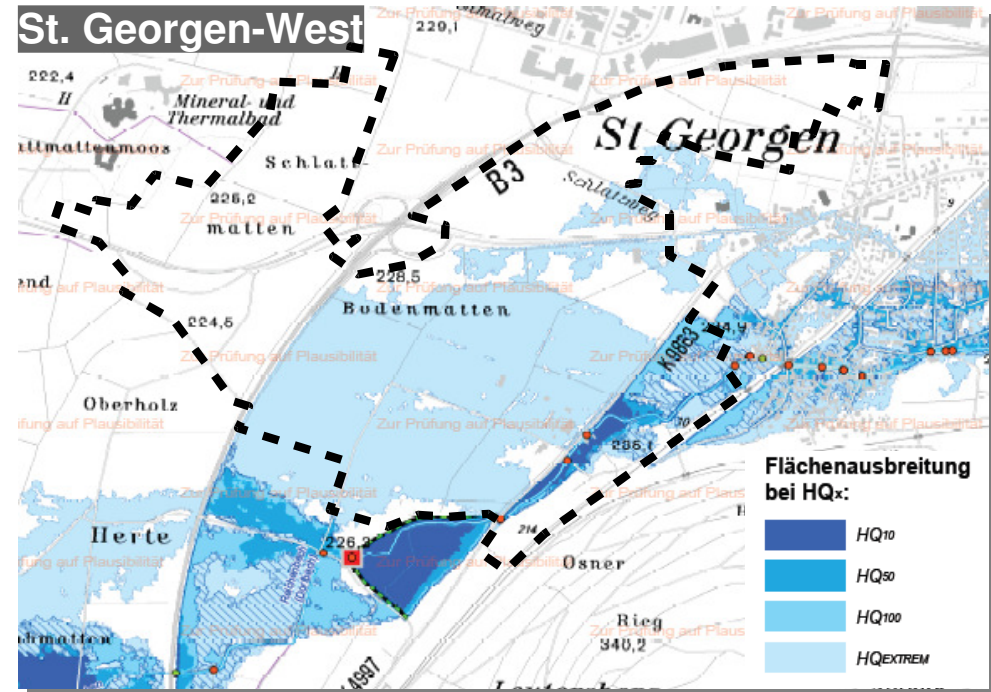
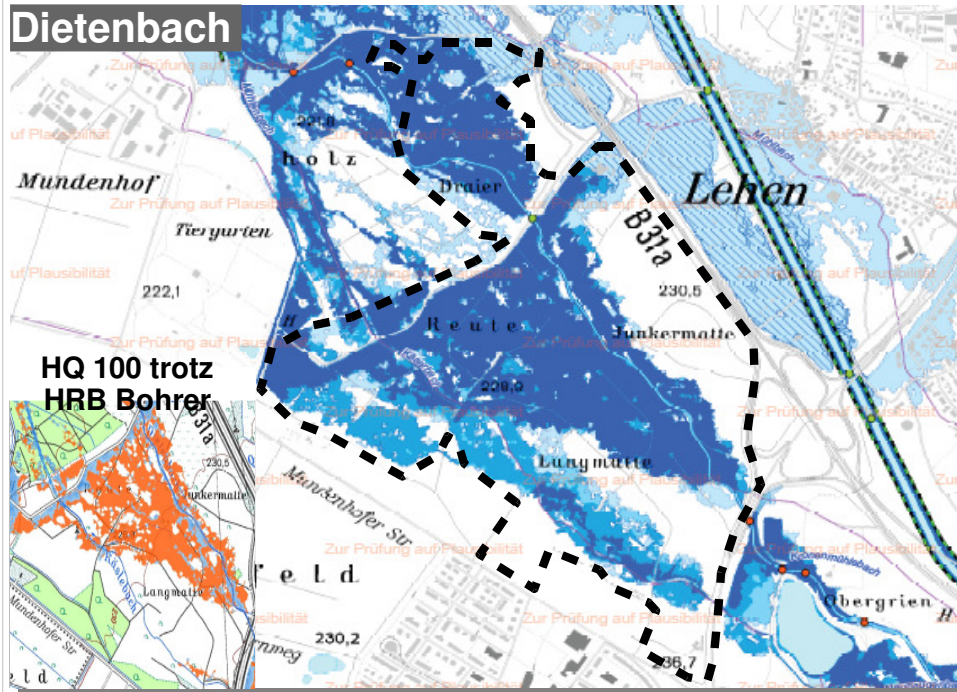


# Landschaftsplan





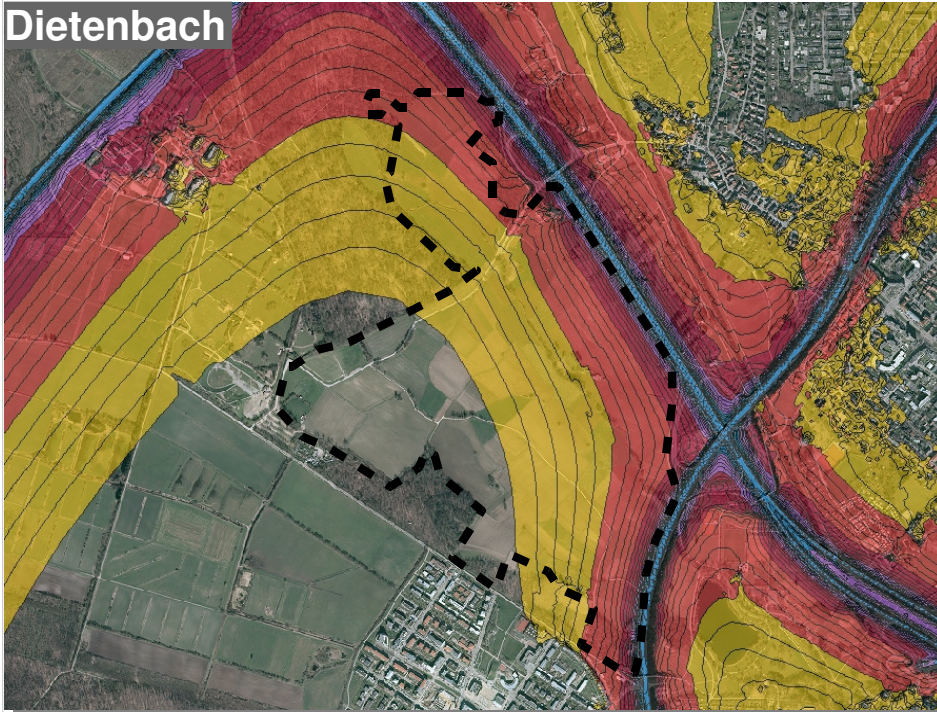
# Hochwassergefahrenkarte (Entwurf)



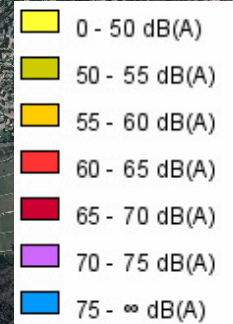
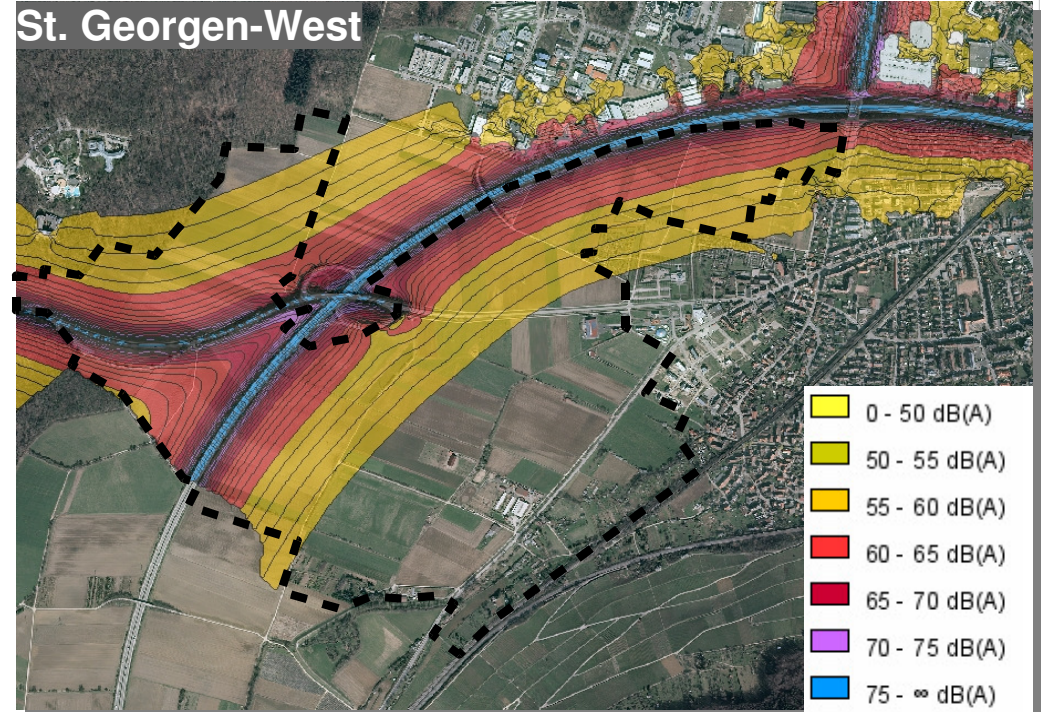


# Lärmsituation

Dietenbach

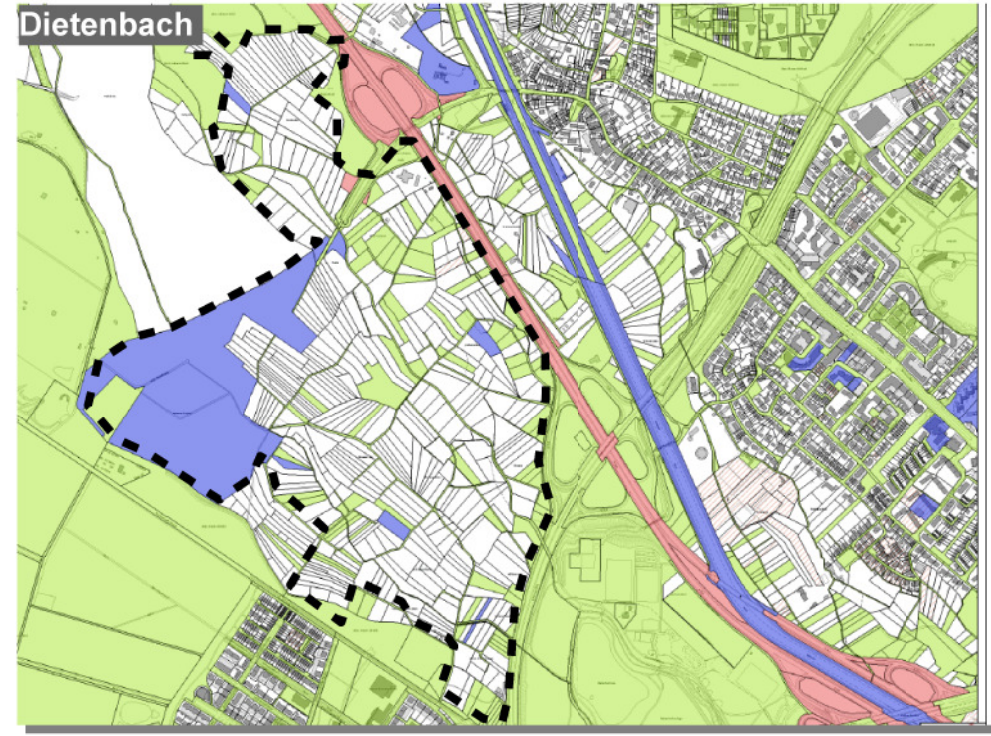
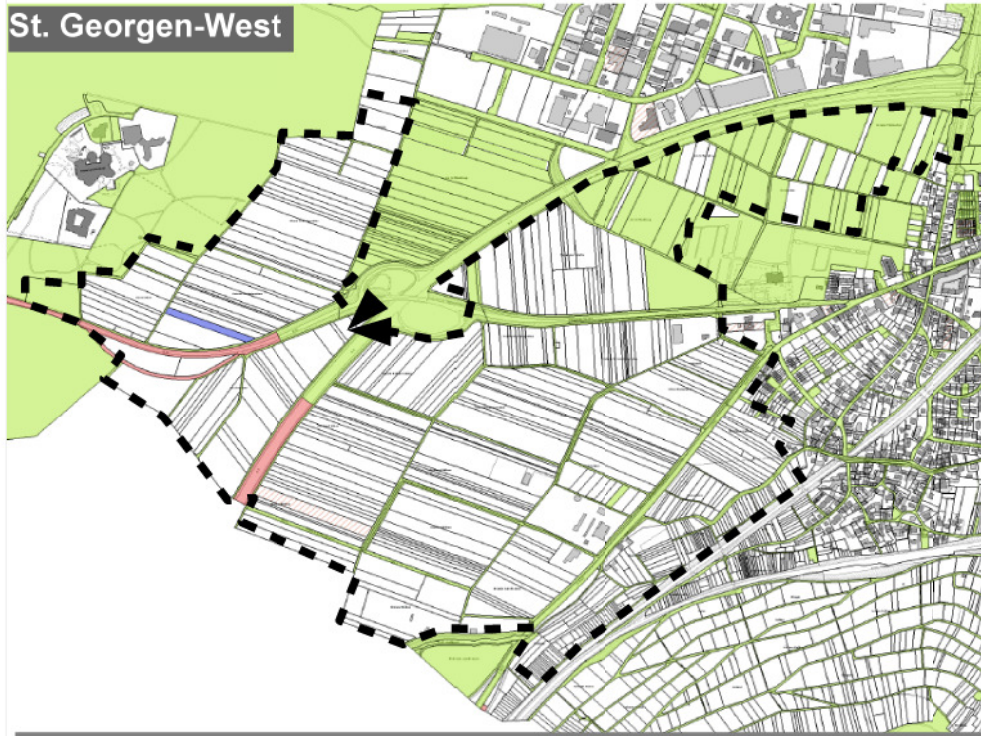


St. Georgen-West





# Eigentumsstruktur



- privat
- Stiftungsverwaltung
- Freiburger Stadtbau GmbH
- Bundesrepublik Deutschland
- Land Baden-Württemberg
- Stadt Freiburg im Breisgau